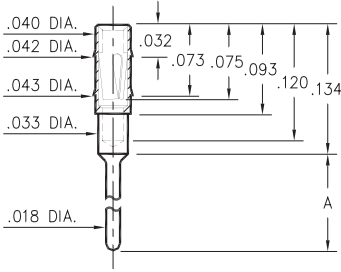


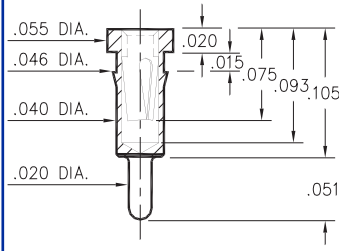
0489



Basic Part Number	Length A
0489-0	.102
0489-1	.199
0489-2	.299

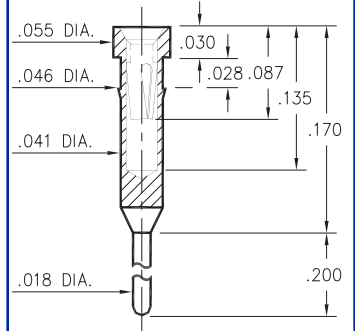
0489-X-15-XX-11-XX-04-0
Press-fit in .041 mounting hole.

0463



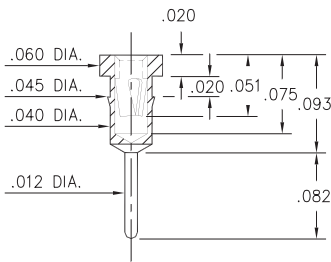
0463-0-15-XX-21-XX-04-0
Press-fit in .043 mounting hole.
shell is Phos. Br. Alloy 544 (B2)

0466



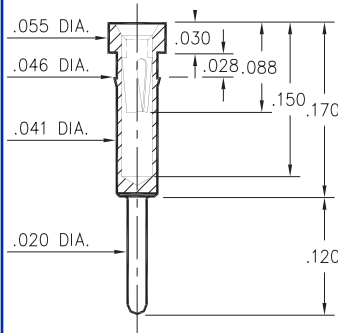
0466-0-15-XX-21-XX-04-0
Press-fit in .043 mounting hole.
shell is Phos. Br. Alloy 544 (B2)

7491



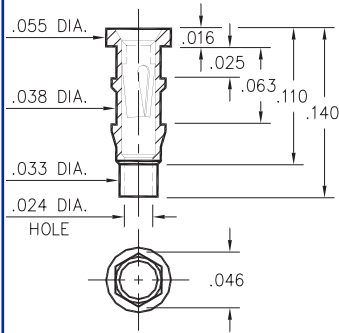
7491-0-15-XX-X1-XX-04-0
Press-fit in .042 mounting hole

0462



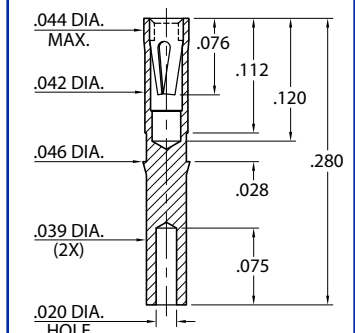
0462-0-15-XX-X1-XX-04-0
Press-fit in .043 mounting hole

0560



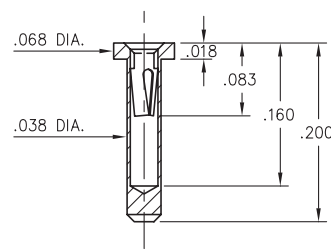
0560-0-15-XX-11-XX-10-0
Hex press-fit in .043 plated thru hole

5557



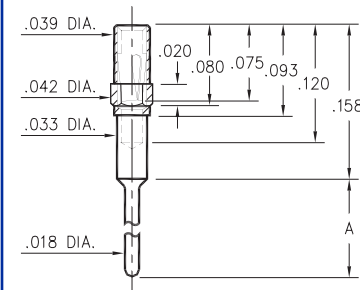
5557-0-19-XX-21-XX-10-0
Wire termination and Press-fit in .043 hole

5552



5552-0-15-XX-05-XX-10-0
Solder mount in .040 min. mounting hole

4890



4890-X-15-XX-11-XX-04-0
Octagonal press-fit in .041 mounting hole.

Basic Part Number	Length A
4890-0	.102
4890-1	.199
4890-2	.299

SPECIFICATIONS

SHELL MATERIAL:
Brass Alloy 360, 1/2 Hard

CONTACT MATERIAL:
Beryllium Copper Alloy 172, HT

DIMENSION IN INCHES
TOLERANCES ON:
LENGTHS: ±.005
DIAMETERS: ±.002
ANGLES: ± 2°

ORDER CODE: XXXX - X - XX - XX - XX - XX - XX - 0

BASIC PART # →

SPECIFY SHELL FINISH:

- 01 200µ" TIN/LEAD OVER NICKEL
- 80 200µ" TIN OVER NICKEL ◊
- 15 10µ" GOLD OVER NICKEL ◊

SPECIFY CONTACT FINISH:

- 02 100µ" TIN/LEAD OVER NICKEL
- 84 100µ" TIN OVER NICKEL ◊
- 27 30µ" GOLD OVER NICKEL ◊

SELECT CONTACT

#05, #11 or #21 CONTACT (DATA ON PAGE 206 & 207)

